

MGE Solution-Pac / Web-Pac

Introduction to :

- ▶ XML-WebCard
- ▶ UPS-Web Pac (XML-@gent/ XMLClient)

www.mgeups.com

THE UNINTERRUPTIBLE POWER PROVIDER

Compare to other products

Solution-Pac :

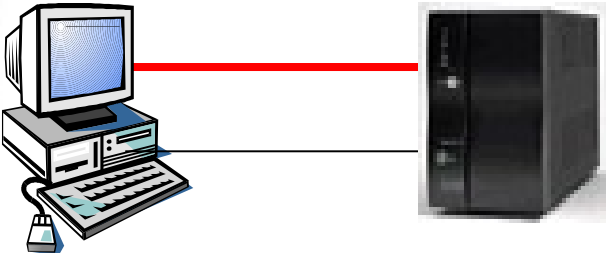
- ▶ **When utility failure occurs**
 - > provide data security
 - > warn the users
 - > trigger actions
 - > Shutdown OS then UPS

- ▶ **When utility is restored, allow automatic startup of UPS + OS**

- ▶ **Provide supervision function**

Personal Solution-Pac

Protection / Supervision



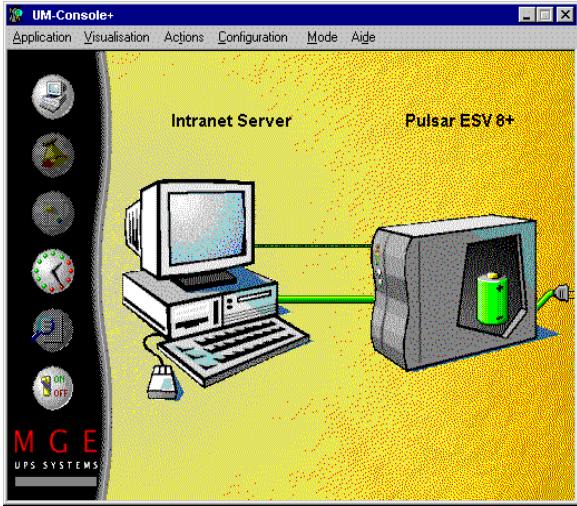
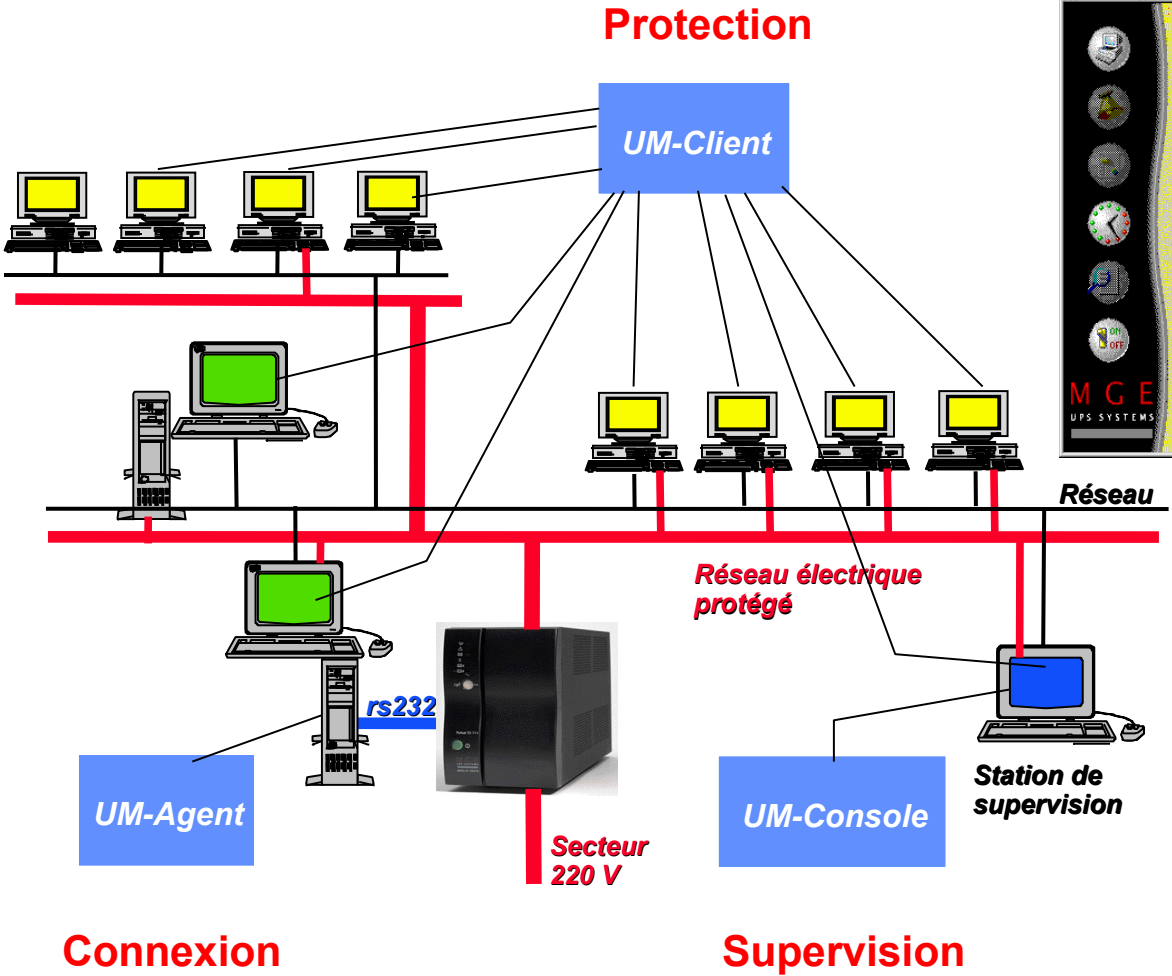
point to point communication

Alarmes de l'onduleur	
Message	Date
Arrêt système dans 18 mn 53 s	28/02/01 14:38:30

The screenshot shows the 'Onduleur MGE' software window. The title bar reads 'Onduleur MGE'. The main content area displays the following information:

- Titre: Onduleur MGE
- Texte principal: Votre onduleur en un coup d'oeil ellipse 500
- Image: Illustration d'un onduleur MGE.
- Section 'Etat de l'onduleur':
 - Communication: OK
 - Alimentation: Secteur
 - Etat batterie: En charge
- Section 'Informations batterie':
 - Autonomie totale: 28 mn 35 s
 - Niveau batterie: 100 %
 - Barre de progression: Une barre à 100% de remplissage.
 - Niveau batterie déclenchant l'arrêt du système (30 % - 90 %): 30 %
- Buttons: Configuration..., Historique..., A propos...
- URL: <http://www.mgeups.com>
- Buttons de base: OK, Annuler, Appliquer

Solution-Pac / WAN



Network communication based on SNMP protocol

UPS Web-Pac

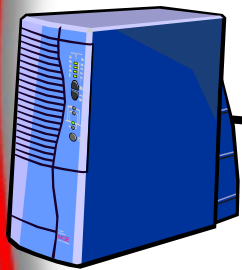


Connexion
XML-Web Card

Supervision
Browser



Connexion
XML-Web Card



http / https



Connexion
+
Protection

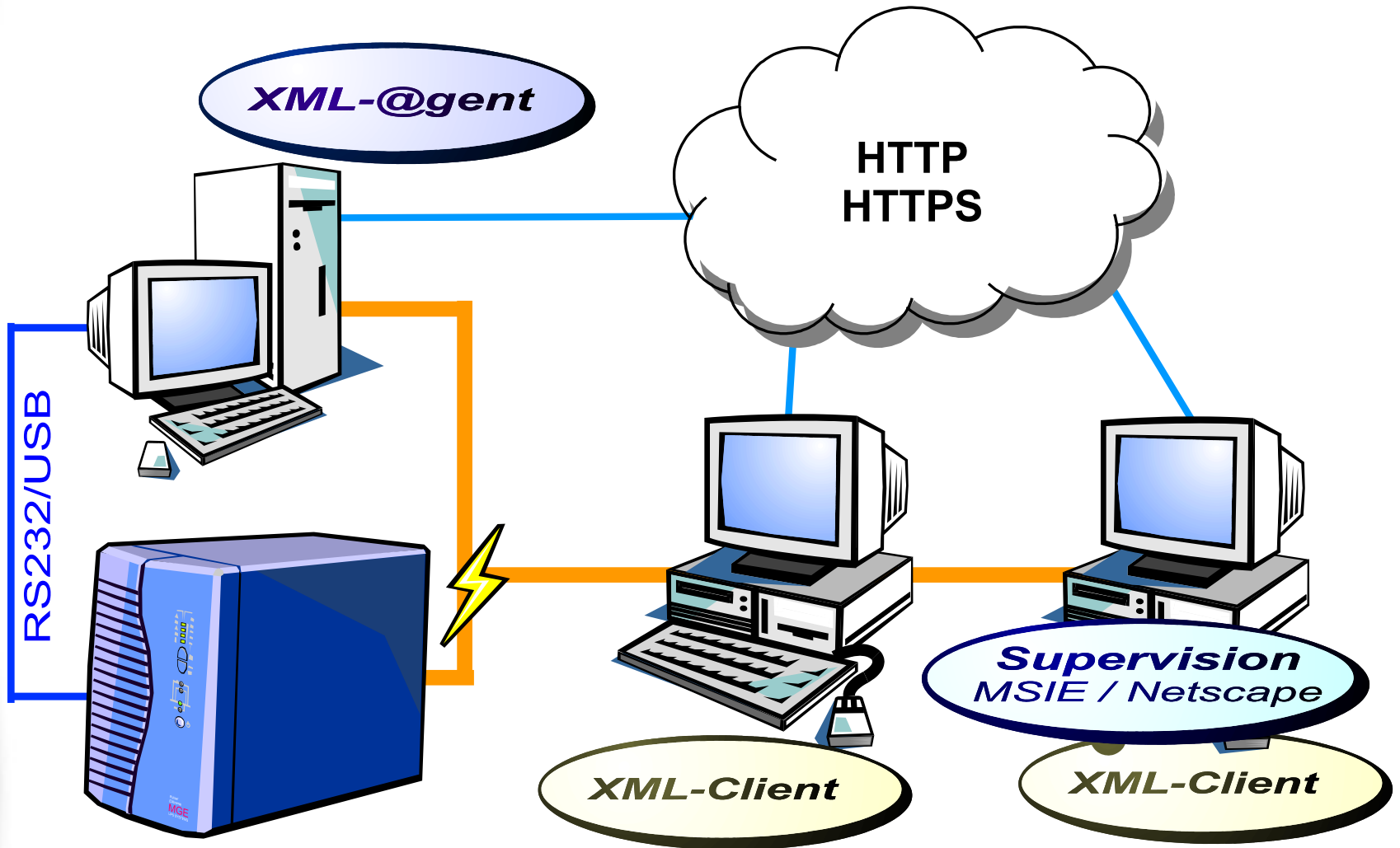
XML-Agent



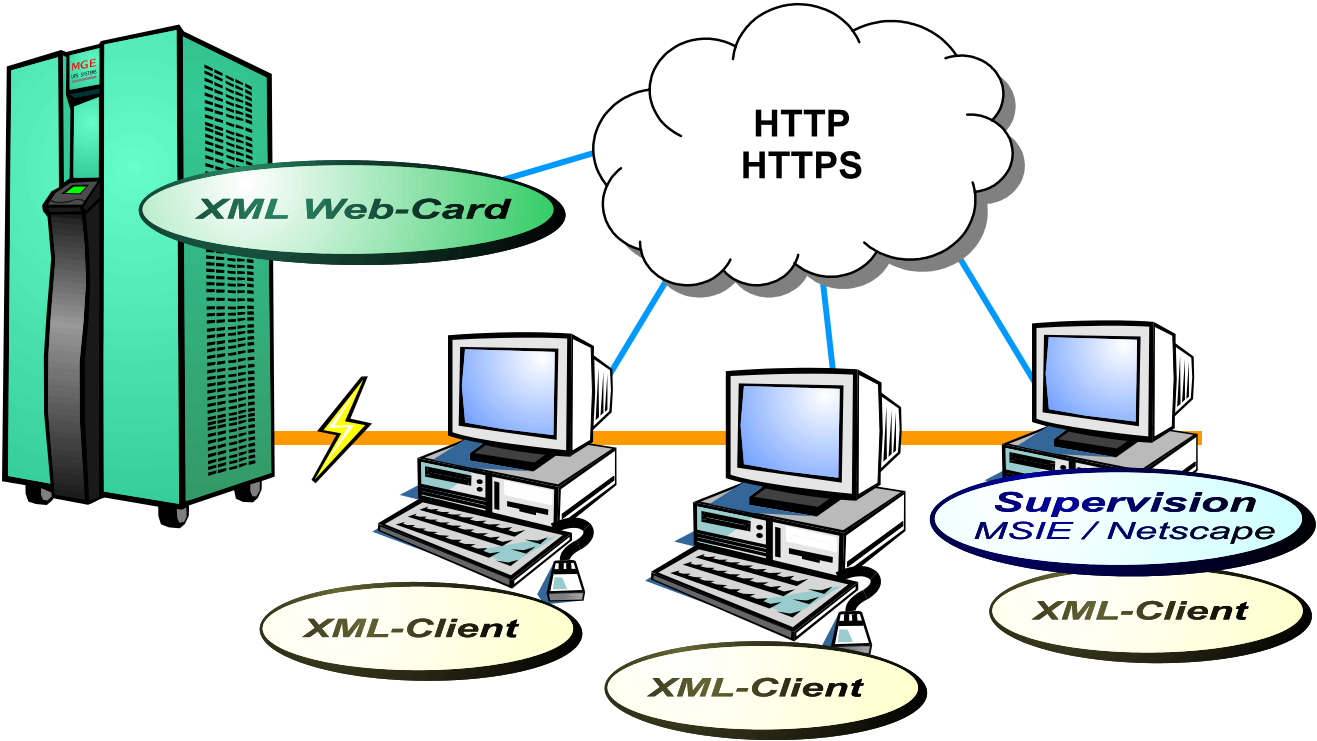
Protection
XML-Client



UPS Web-Pac



UPS Web-Pac



UPSs GALAXY



Galaxy PW



Galaxy 3000



MGE **UPS** SYSTEMS

Pulsar / COMET EXtreme



Transverse Communication
I2C => XML-Web Card
PSP (Utalk+Shut+USB) =>
XML@gent

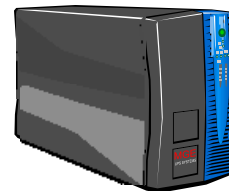
Pulsar Extreme C



EPS 6000



Pulsar Esprit



Pulsar Evolution

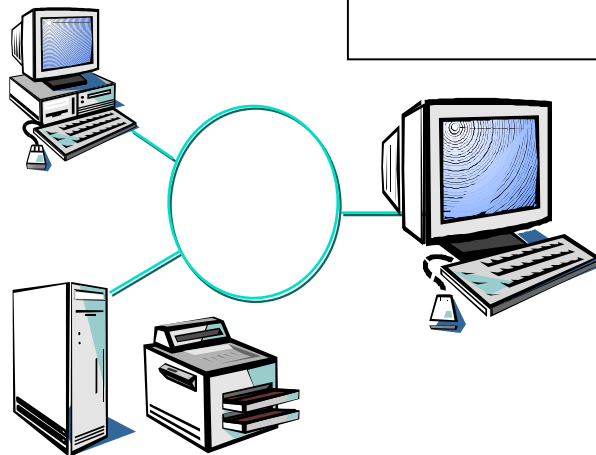
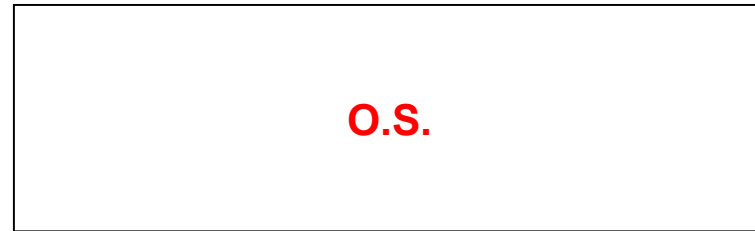
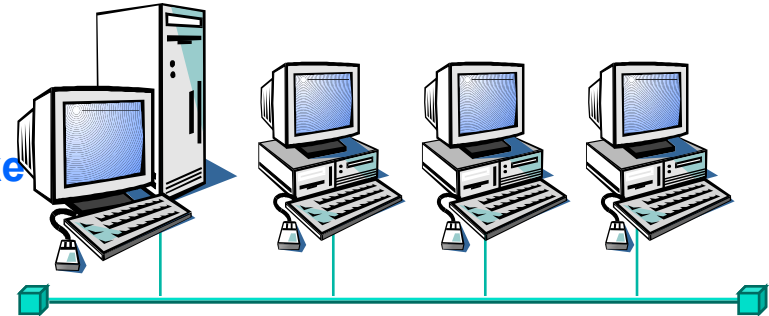
Pulsar ESV+



Pulsar Ellipse Premium

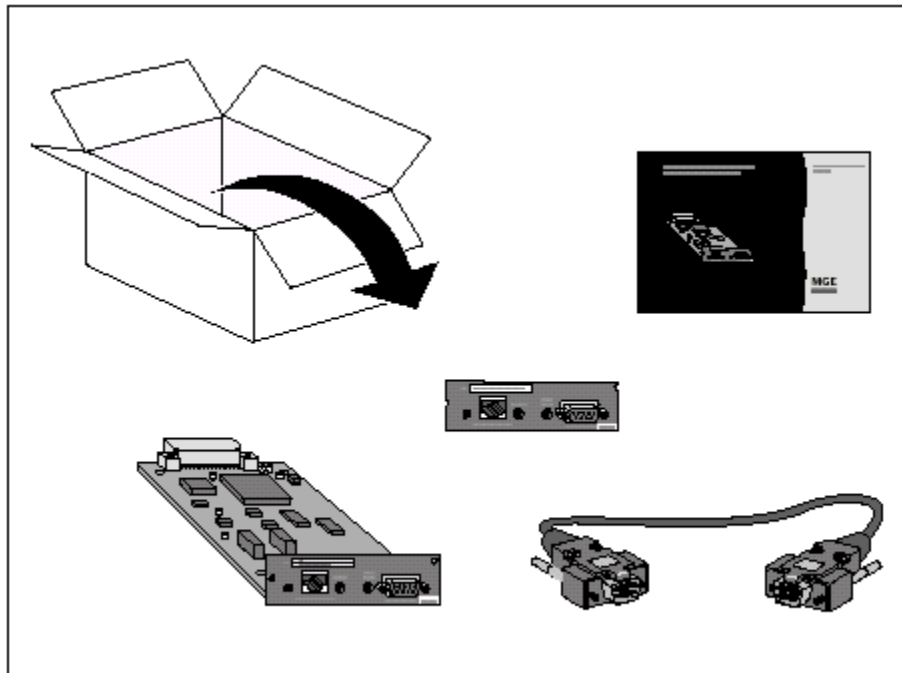
Ellipse

- ▶ Windows NT / 2000 (Agent + Client)
- ▶ Linux Red Hat 7 (Client)
- ▶ SUN Solaris WS (Client)
- ▶ Linux SuSe/Mandrake

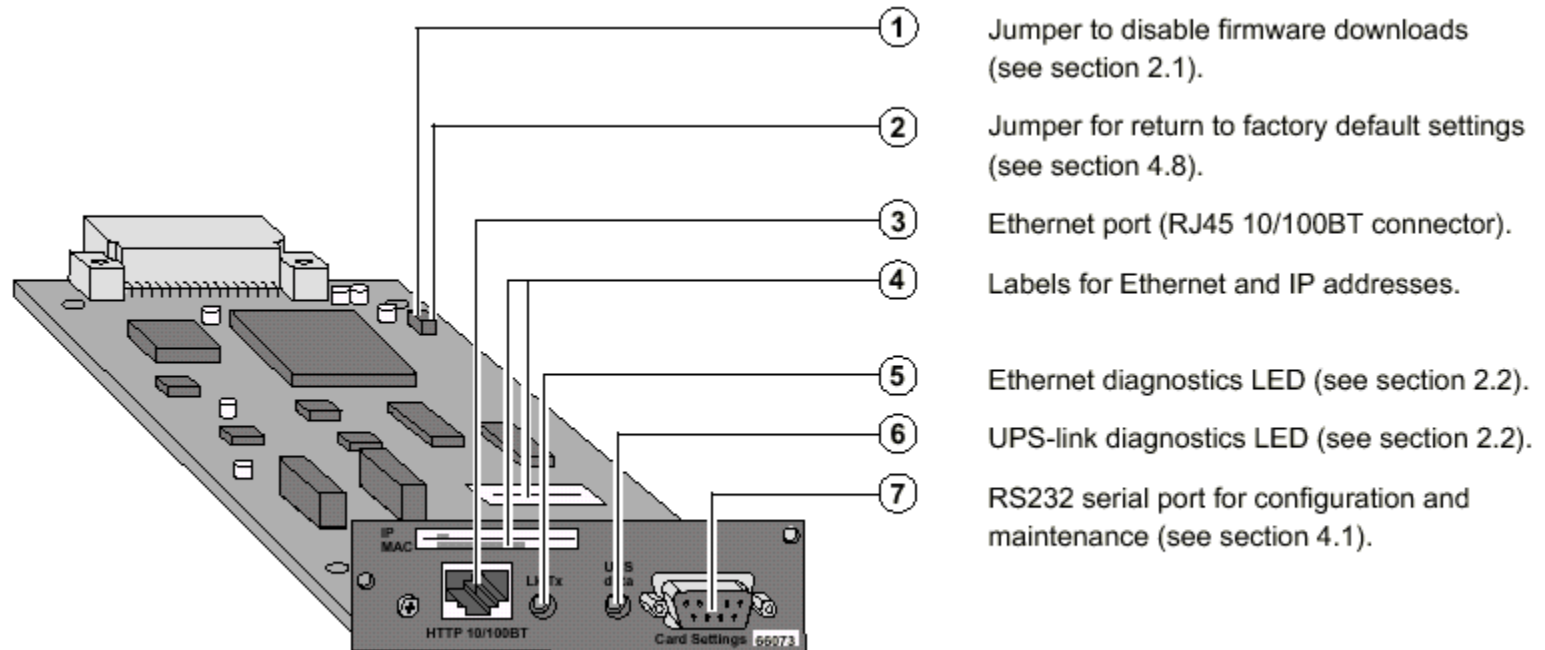


- ▶ IBM AIX
- ▶ HP UX
- ▶ Mac OS X
- ▶ OS2/Novell
- ▶ Etc....

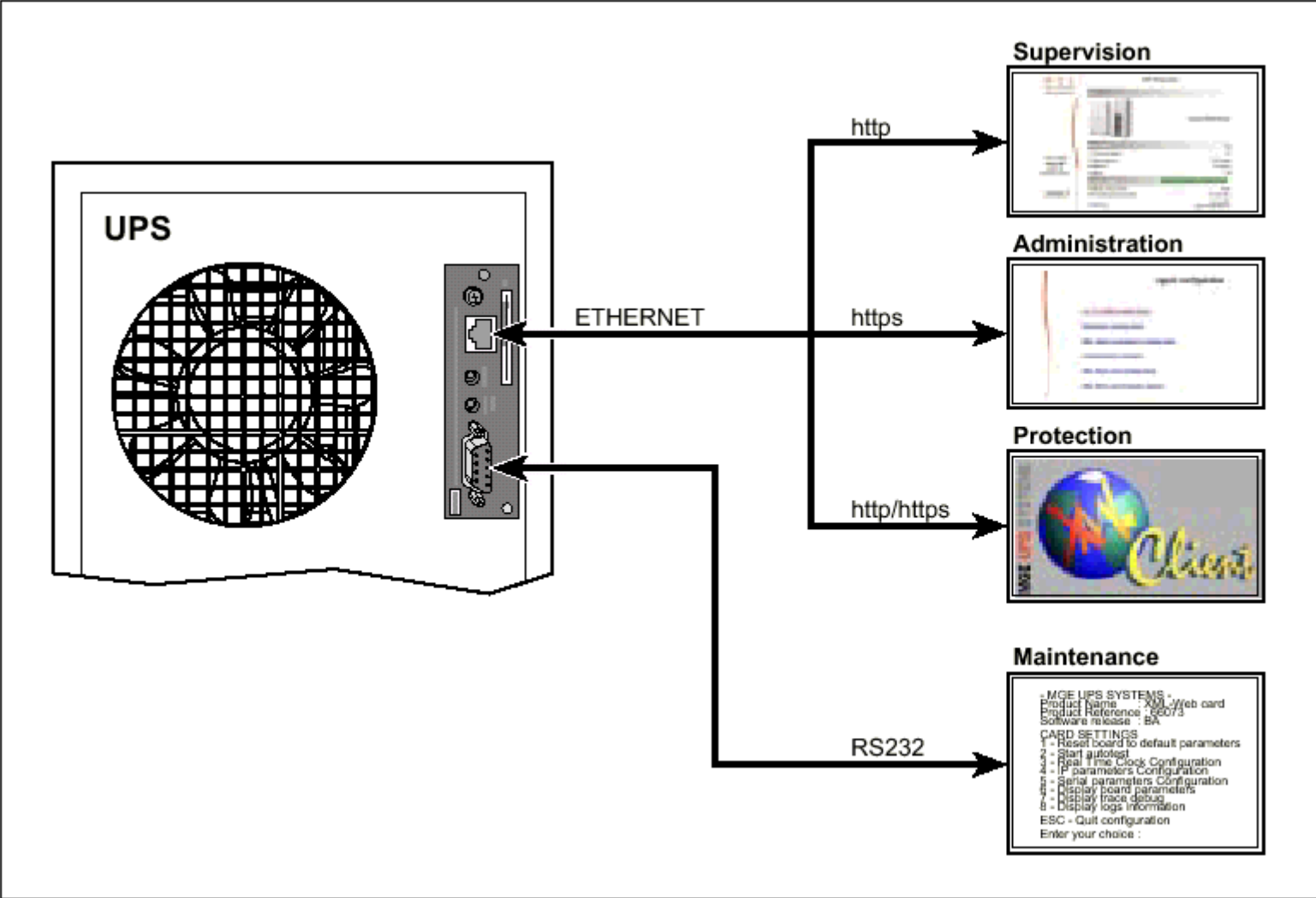
XML-Web card : package



XML-Web card : overview



XML-Web card : functions



XML-Web card : technical characteristics

Functions	Characteristics
Supervision	<ul style="list-style-type: none"> - Simultaneous connection of up to ten browsers - Up to 250 events stored in memory with battery backup
Protection	<ul style="list-style-type: none"> - Up to 50 XML-Client connected to the card
Ethernet	<ul style="list-style-type: none"> - HTTP and/or HTTPS protocol - Simultaneous management of the two protocols - 10/100 Mbytes, auto-negotiation
Internet security	<ul style="list-style-type: none"> - SSL 2.0, 3.0 - Public key: 512 bits, encryption key: 40 bits - Embedded MGE UPS SYSTEMS certificate
Compatibility	<ul style="list-style-type: none"> - Microsoft Internet Explorer 4.x, 5.x or higher - Netscape Navigator 4.7 or higher
Web-page language	<ul style="list-style-type: none"> - Automatic detection of the browser language - French and English included as standard - Consult our Web site www.mgeups.com on which new languages will be gradually available for download.
Downloads	<ul style="list-style-type: none"> - Easy procedures using an internet browser - Updates of the embedded firmware, personalisation of Web pages, management of events and action
Maintenance	<ul style="list-style-type: none"> - Connection via a simple terminal - Access without disturbing the supervision and protection functions - Menu in English only
Standards	<ul style="list-style-type: none"> - CE class B - FCC part 15 class B

Web download on mgeups.com

SOFTWARE LIBRARY



- ▶ [UPS Web-Pac & XML-Web card](#)
- ▶ [Solution-Pac](#)
- ▶ [Management-Pac](#)
- ▶ [Embedded Software](#)

[**http://www.mgeups.com/download/softlib.htm**](http://www.mgeups.com/download/softlib.htm)

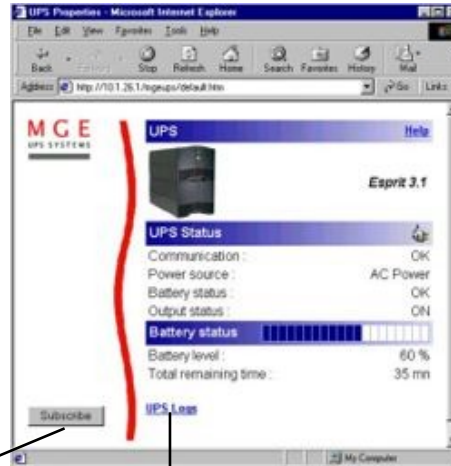
<http://www.mgeups.com/download/soft/XML>

Simple remote functions

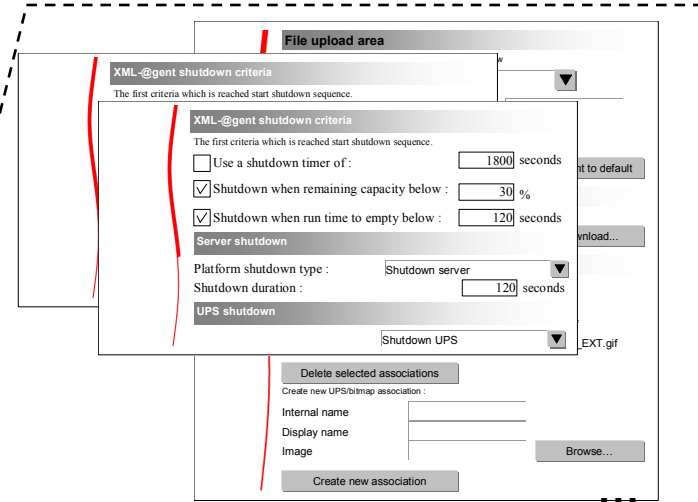
- ▶ **View UPS Properties through browser**
- ▶ **Possibility to receive UPS alarms through Web browser**
- ▶ **Access to Logs**
- ▶ **View “Notified application List”**

XML-Web Card / XML-@gent pages (remote access)

Home page

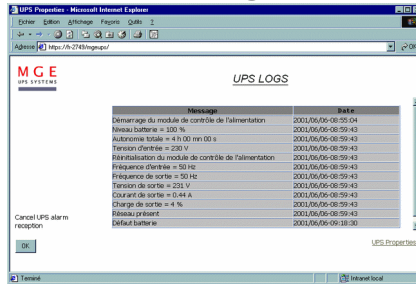
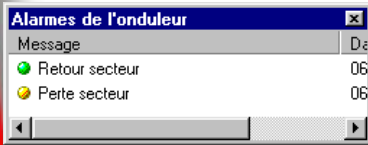


XML-Card/Agent management

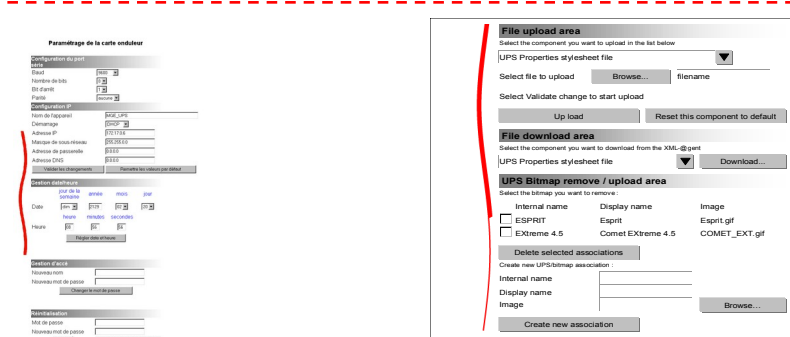


Notification

Logs



Dedicated pages to XML-Web card



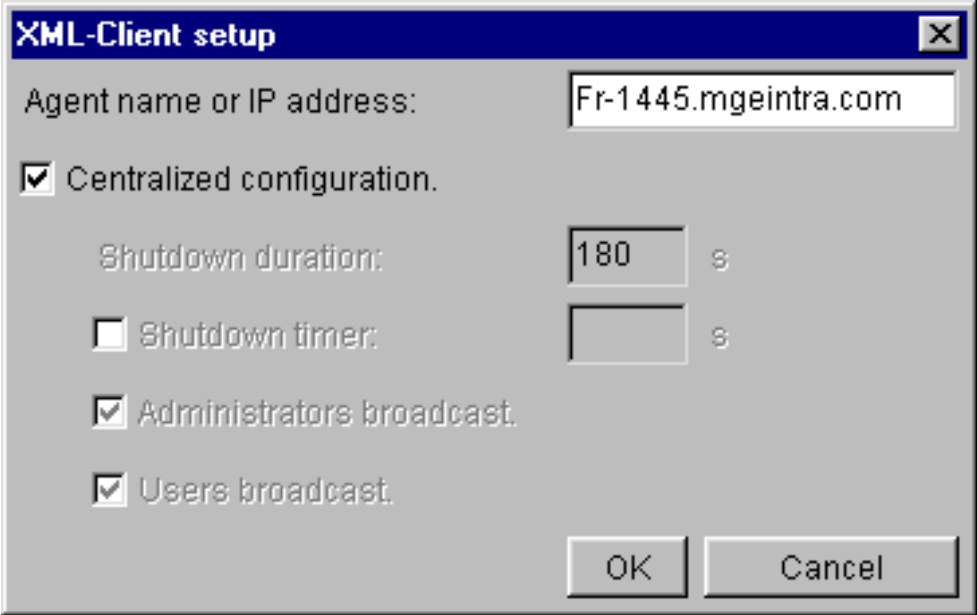
Caru settings management Upload firmware

Client Local simple functions

Windows Shortcuts to access to Functions (client)



Basic Setup for clients (minimal setting)



Agent Local simple functions

- ▶ Agent Shutdown settings in 1 screen
- ▶ Graphical Event viewer (local to Agent)
- ▶ Windows Shortcuts to access to Functions (agent)

Conclusion

*

► Ready to install It ?

